



PLK
POLSKIE LINIE KOLEJOWE

PKP cargo
GRUPA PKP




INVESTMENT OFFER OF THE TOWN OF SĘDZISZÓW





Brief characteristics of the town

- *Sędziszów is a town with over 7000 inhabitants. Its localisation, and in particular its railway and road infrastructure, makes the town an attractive place on the map of Poland as regards the transport and logistic industry. It is especially visible when we consider the East-West transport route, and in particular the export and import of goods from the Commonwealth of Independent States and from the Far East.*

- 
- *Our well-developed railway and road infrastructure provides good conditions for development and creates possibilities of investment in numerous innovative enterprises contributing to the diversification of the fossil fuels supplies or the materials and technologies used in the process of the development of road infrastructure.*

SĘDZISZÓW IN EUROPE





The origin of the project

- *The local government of the Sędziszów Commune decided to contribute actively to the process of the economic development of the region by creating good conditions for the creation and development of innovative enterprises in its area. These conditions mean in particular preparing an appropriate „Commune Development Plan”, taking into consideration the requirements of the potential investors concerning the site localisation.*
- *During a number of meetings, in which representatives of the local government, investors, and PKP LHS sp. z o.o. took part, a preliminary investment project was created, which specifies: the type of the investment activity, the capacity of the transported medium, the transport needs of the particular potential PKP LHS clients, a possibility to connect railway sidings, both broad-gauge and normal-gauge, to the investment areas, and a necessary improvement of the existing road infrastructure.*

A minimum scope of impact of the local logistic centre



SĘDZISZÓW

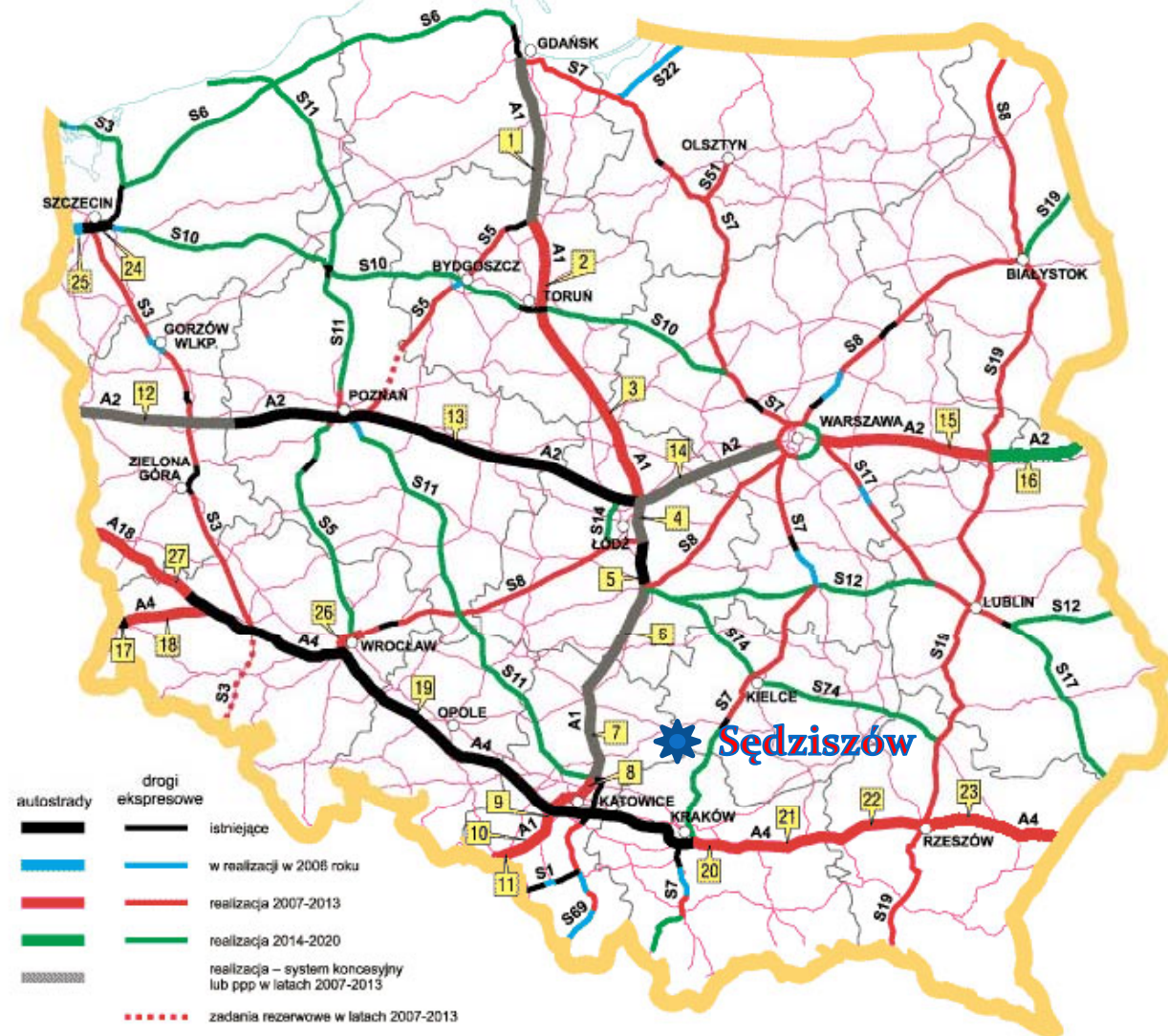
Localisation
against the main
traffic routes

Sędziszów
is situated in the
centre of Southern
Poland, close to
two main planned
traffic routes:

-A1 Route
connecting the
north and south of
Poland,

-A4 Route
connecting the
east and west of
Poland

Autostrady i drogi ekspresowe – stan realizacji



AUTOSTRADA A1

- 1 Gdańsk – Nowe Marzy – 91 km / 2005-2008
- 2 Nowe Marzy – Toruń – 61 km / 2008-2010
- 3 Toruń – Stryków – 144 km / 2008-2010
- 4 Stryków – Tuszyn – 40 km / 2008-2010
- 5 Autostrada w eksploatacji – 18 km
- 6 Piotrków Tryb. – Częstochowa – 83 km / 2008-2010
- 7 Częstochowa (Rzasa) – Pyrzowice – 55 km / 2008-2010
- 8 Pyrzowice – Sońnica – 43 km / 2008-2010
- 9 Sońnica – Bełk – 16 km / 2007-2008
- 10 Bełk – Świerklany – 14 km / 2007-2010
- 11 Świerklany – Gorzyckie – 19 km / 2007-2009

AUTOSTRADA A2

- 12 Świecko – Nowy Tomyśl – 105 km / 2007-2009
 - 13 Autostrada w eksploatacji – 252 km
 - 14 Stryków – Konotopa – 94 km / 2008-2010
 - 15 Warszawa (węzeł Lub.) – Miedzyrzec Podl. – 92 km / 2011-2014
 - 16 Miedzyrzec Podl. – Kukuryki – 62 km / po roku 2013
- ### AUTOSTRADA A4
- 17 Autostrada w eksploatacji – 2 km
 - 18 Zgorzelec – Krzyżowa – 51 km / 2006-2008
 - 19 Autostrada w eksploatacji – 381 km
 - 20 Kraków – Szarów – 20 km / 2007-2009
 - 21 Szarów – Tarnów – 57 km / 2009-2011

- 22 Tarnów – Rzeszów – 80 km / 2010-2013
- 23 Rzeszów – Korczowa – 86 km / po roku 2013

AUTOSTRADA A6

- 24 Autostrada w eksploatacji – 21 km

- 25 Klucz – Kijewo (przeb.) – 8 km / 2005-2007

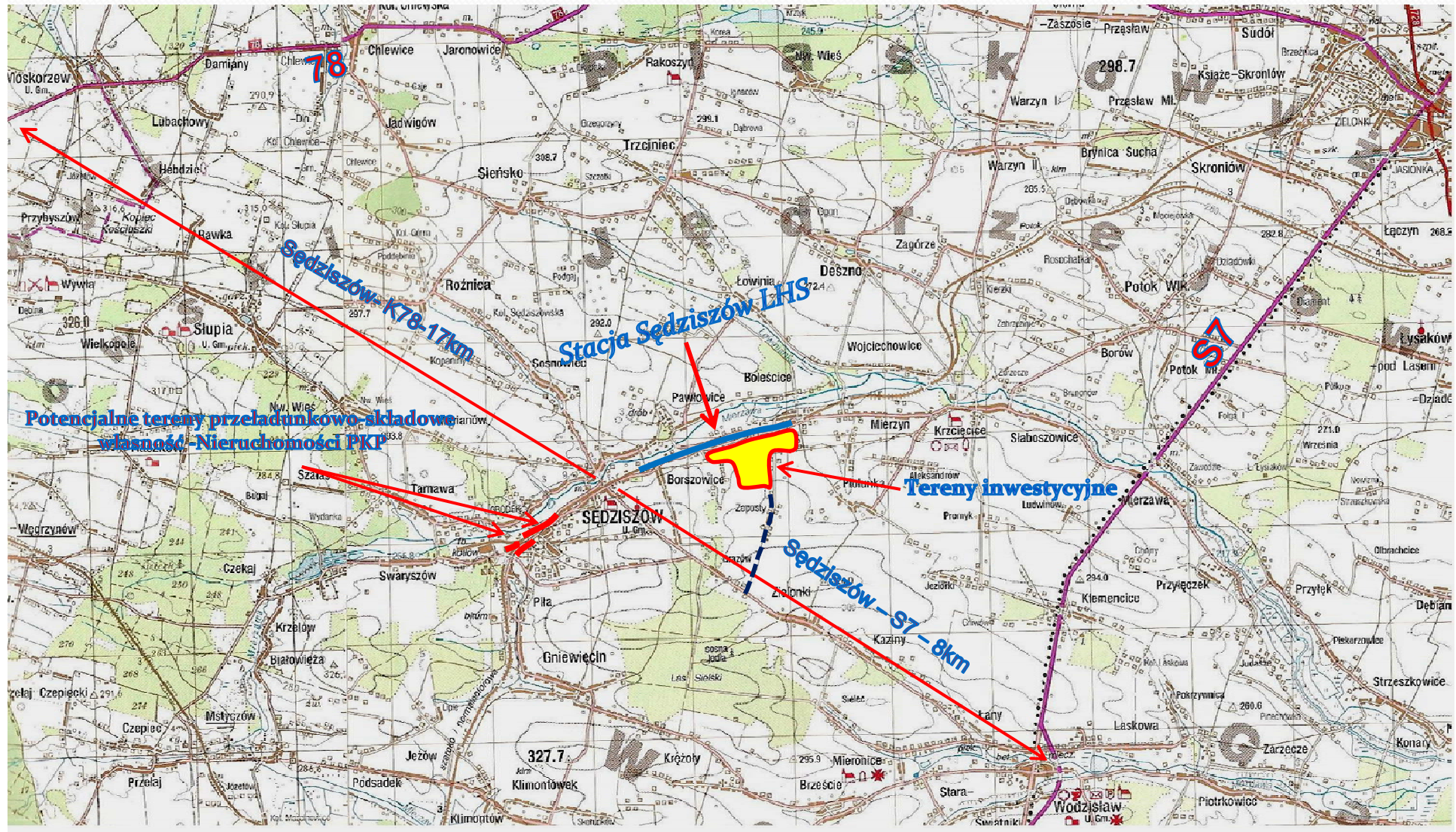
AUTOSTRADA A8

- 26 Obwodnica Wrocławia – 28 km / 2008-2010

AUTOSTRADA A18

- 27 Olszyna – Goniące – 71 km / 2004-2010

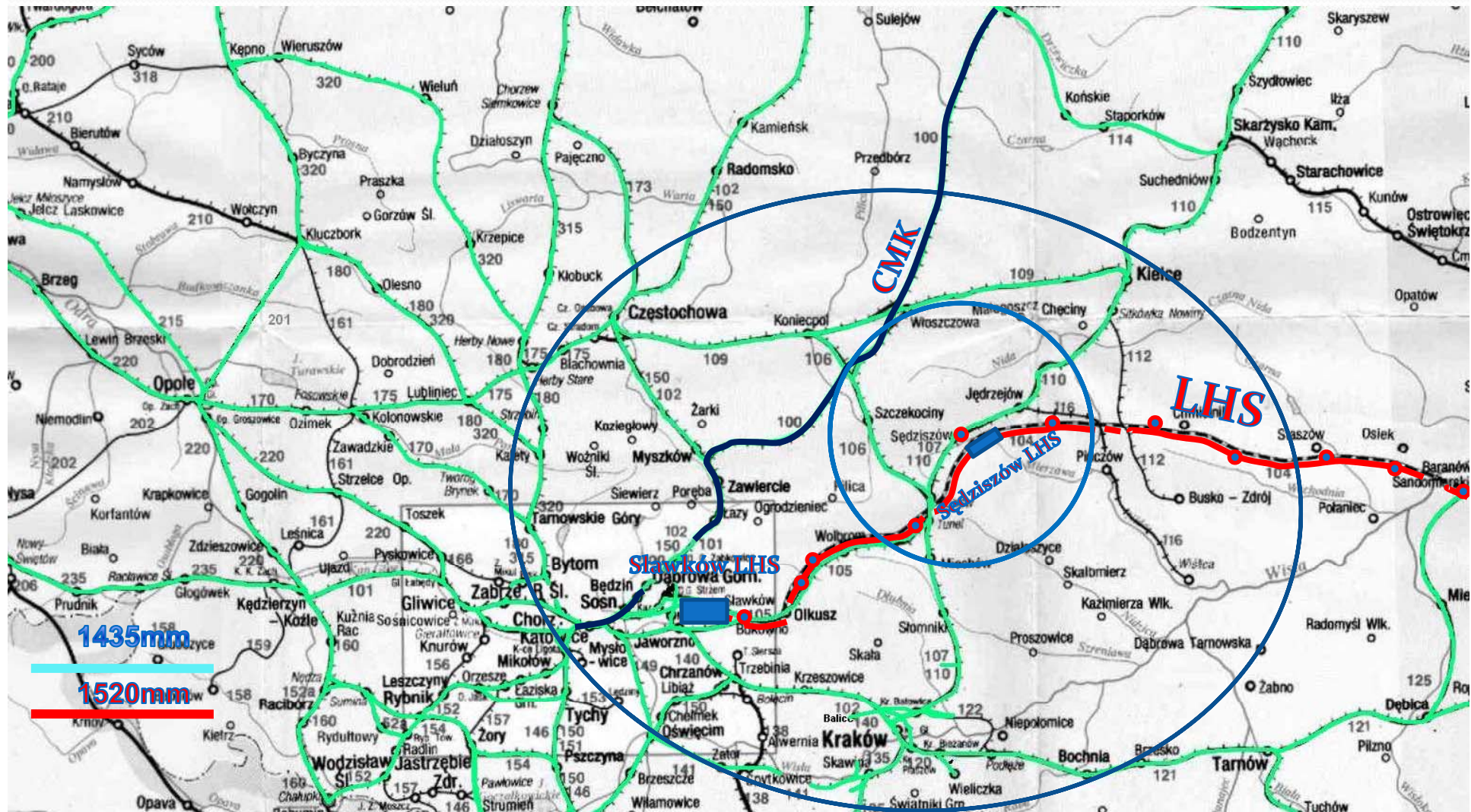
- S7 EXPRESSWAY
- PUBLIC ROAD NO 78



Road distances from the closest conurbations



Junction of the railway broad-gauge and normal-gauge lines crossing each other in the investment areas



Railway Infrastructure

Sędziszów is a big railway junction, where two railway systems, the 1435 and the 1529 mm ones, cross each other.

Within the normal (1435 mm) gauge station, there is an infrastructure, which may be used for reloading and storing different kinds of cargos.

Within the Sędziszów LHS (1520mm) station there is a „Transport Switching Point”, used for switching wagons from the 1520mm railway system to the 1435mm system, and vice versa.

Sędziszów „N” Station



Sędziszów LHS „S” Station



Infrastructure of the Sędziszów LHS station

View on the station from the east



Transport Switching Point



Infrastructure of the 1435mm station

Halls and umbrella roofs
after the previous wagon
house.



The map shows the investment area in the Lubuskie voivodeship, centered around the town of Sędziszów. The proposed route for the LHS (Lubuska Kolej Samochodowa) is indicated by a blue dashed line, with a red solid line segment labeled "STRAKA PRZEŁĄCZNIKÓW" (switching track) near Sędziszów. The map also shows the existing LHS line and various towns and villages in the region, including Nagłowice, Zdanowice, Przasław, Sudół, Brzeźnica, Jędrzejów, and Sędziszów. The area is labeled "OBSZAR INWESTYCYJNY" (investment area) in red text.

Investment area





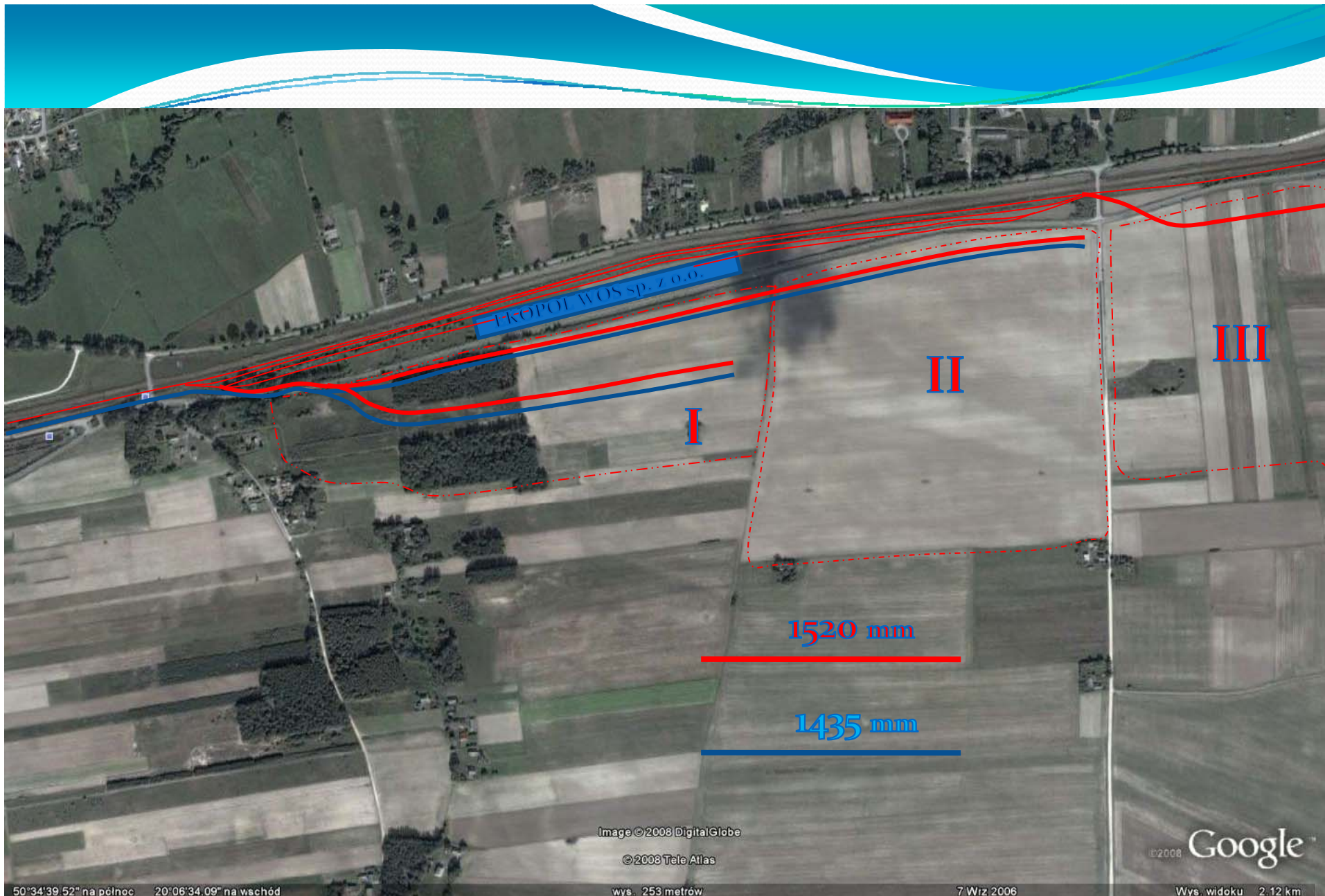
Investment area

View on the province road cutting across the investment area



The railway crossing through which a normal-gauge railway siding is to go, leading to the investment areas.





A bird's-eye view of the investment area



Expectations of the parties to the project

Investors

- ❑ Speeding up the works leading to the connection of the railway sidings of the different systems to the investment areas
- ❑ Starting direct talks aiming at notable effects in the form of mutually worked out projects to increase the pace of the investment
- ❑ Including the representatives of the Ministry of Economics and Infrastructure in the talks in order to monitor the works connected with the project

Local government

- ❑ Support from the county and province authorities, and in particular from the Świętokrzyskie Province Governor and Province Board in order to remove unexpected obstacles or to tone down their results
- ❑ A favourable attitude of the Ministry of Infrastructure and Economy

PKP LHS

- ❑ ?????????????????

Benefits of the participants of the project

PKP LHS

- Diversification of the cargos using the managed broad gauge railway line;
- Increasing the transported cargos;
- Gaining new clients by giving them a possibility to use the reloading yards, situated close to the broad gauge and normal gauge stations;
- Making good use of the already possessed transport switching point;

PKP CARGO or some other railway operator

- Taking over cargos directed on the „N” (1435mm) tracks and their transport to other parts of Poland and to the West of Europe;
- Increasing the amounts of transported cargos;

PKP PLK

- Gaining more profit from transport on the managed railway lines;
- Investors
- Obtaining appropriate investment areas in a place ideal for conducting business activity;

Region, Commune


- Economic development of the region;
- Budget income from tax;
- Employment;

Ministry of Economy

- Diversification of the fossil fuel and gas supplies;
- Increase in the strategic reserves of fuels and gas (a requirement to store only certain amounts by companies);

Ministry of Infrastructure

- Gaining in the centre of Poland a supplier of materials needed for the construction of roads and motorways;
- Increase in railway transport – ecology.

The background is a solid blue gradient. At the top, there are several wavy, horizontal lines in shades of light blue and cyan, creating a sense of movement or a horizon line.

**Thank you
for your attention**